

## ROUTEDESCRIPTION

### Car

- From the interstate A27 from the south take the exit Azu/De Uithof/De Bilt (exit 2)  
Page 2 for maps
- From the interstate A27 from the north take the exit Bilthoven (exit 32)  
Page 3 for maps
- From the interstate A28 from the east take the exit Azu/De Uithof/De Bilt (exit 2)  
Page 4 for maps

### Train

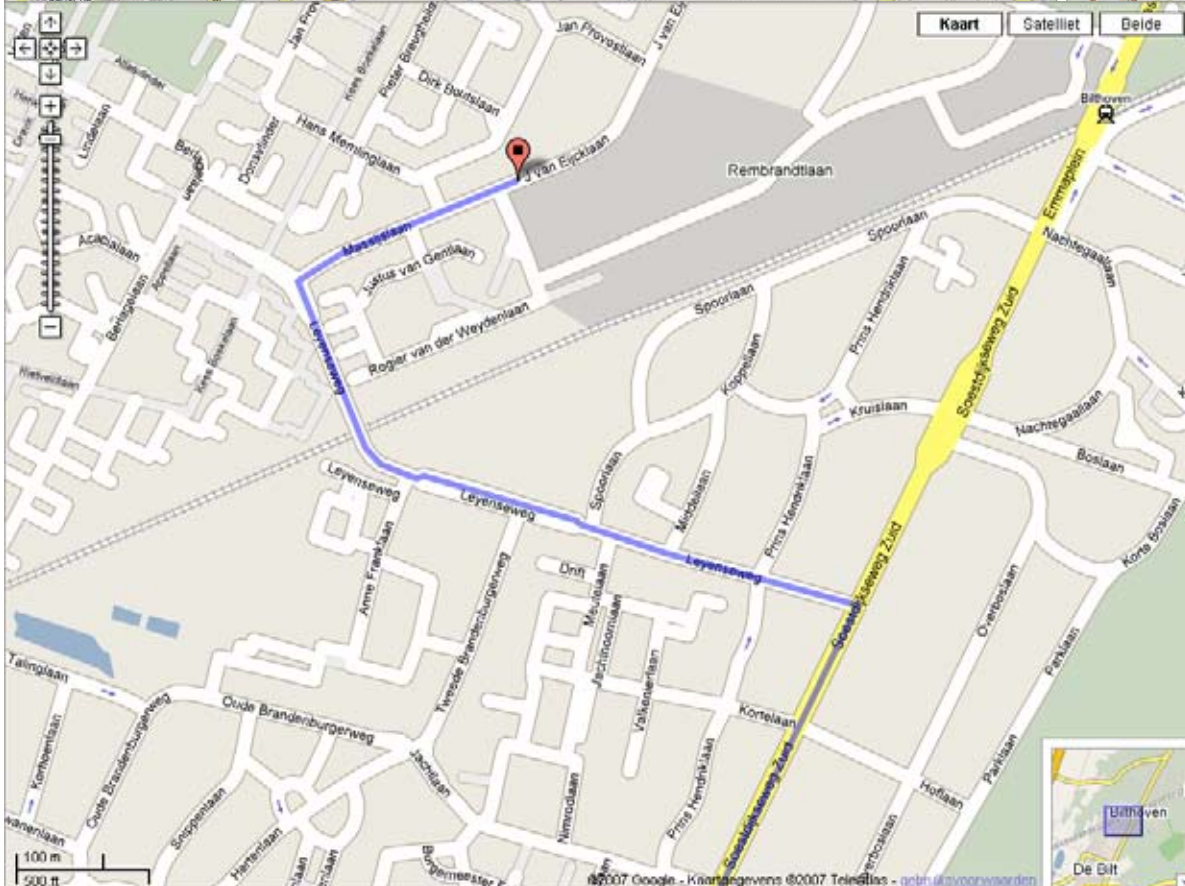
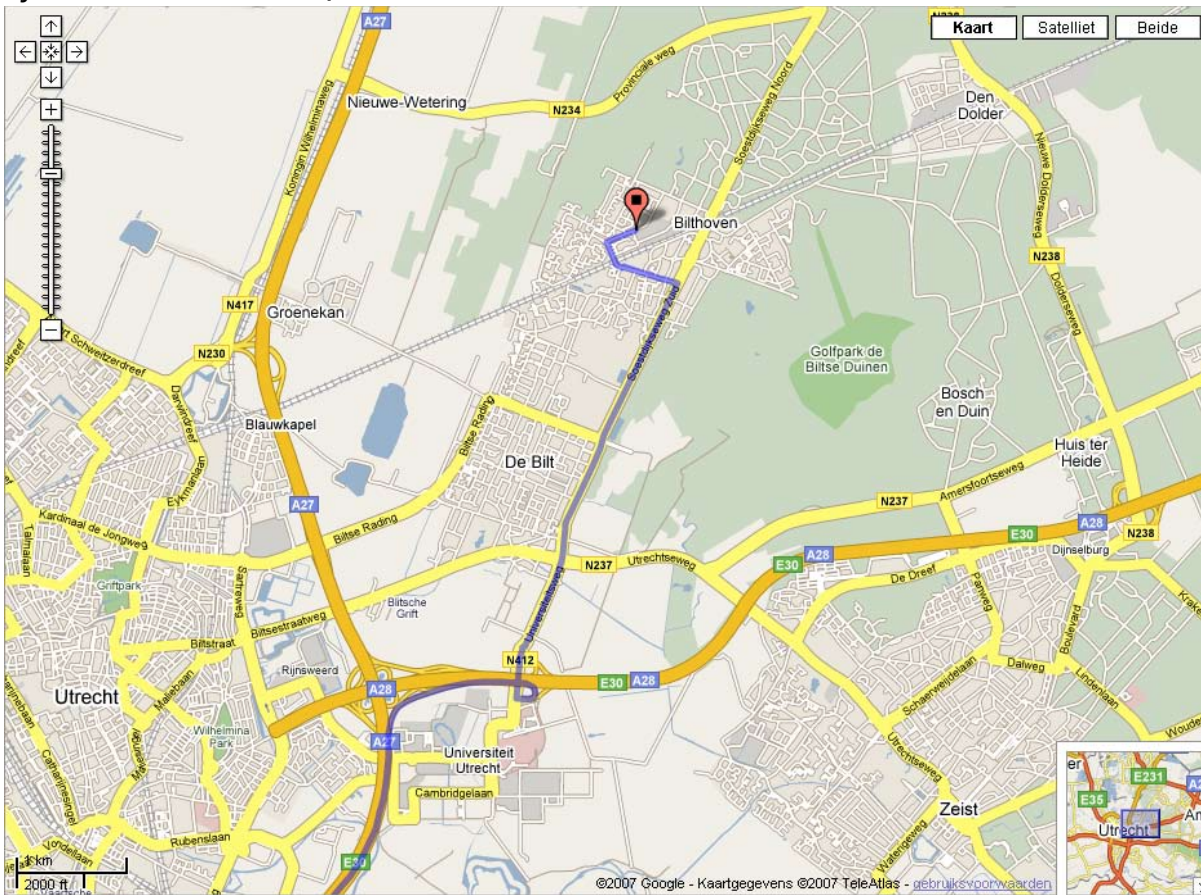
From Utrecht Central Station a train heading to Bilthoven departs four times every hour. The times and platforms which these trains depart from are:

- 6 minutes past the whole hour, departing from platform 3 the heading to Baarn
- 19 minutes past the whole hour, departing from platform 2 the train heading to Amersfoort
- 35 minutes past the whole hour, departing from platform 1 the train heading to Baarn
- 49 minutes past the whole hour, departing from platform 2 the train heading to Amersfoort

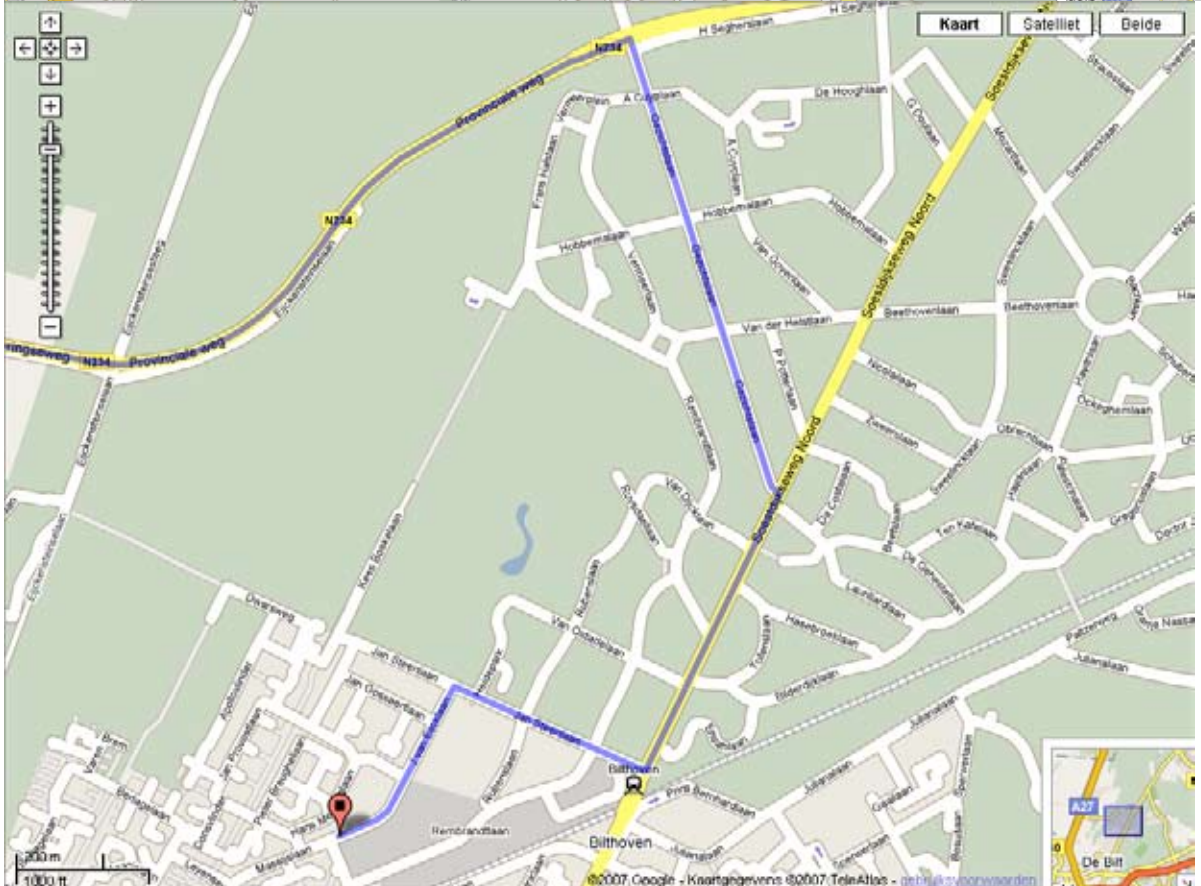
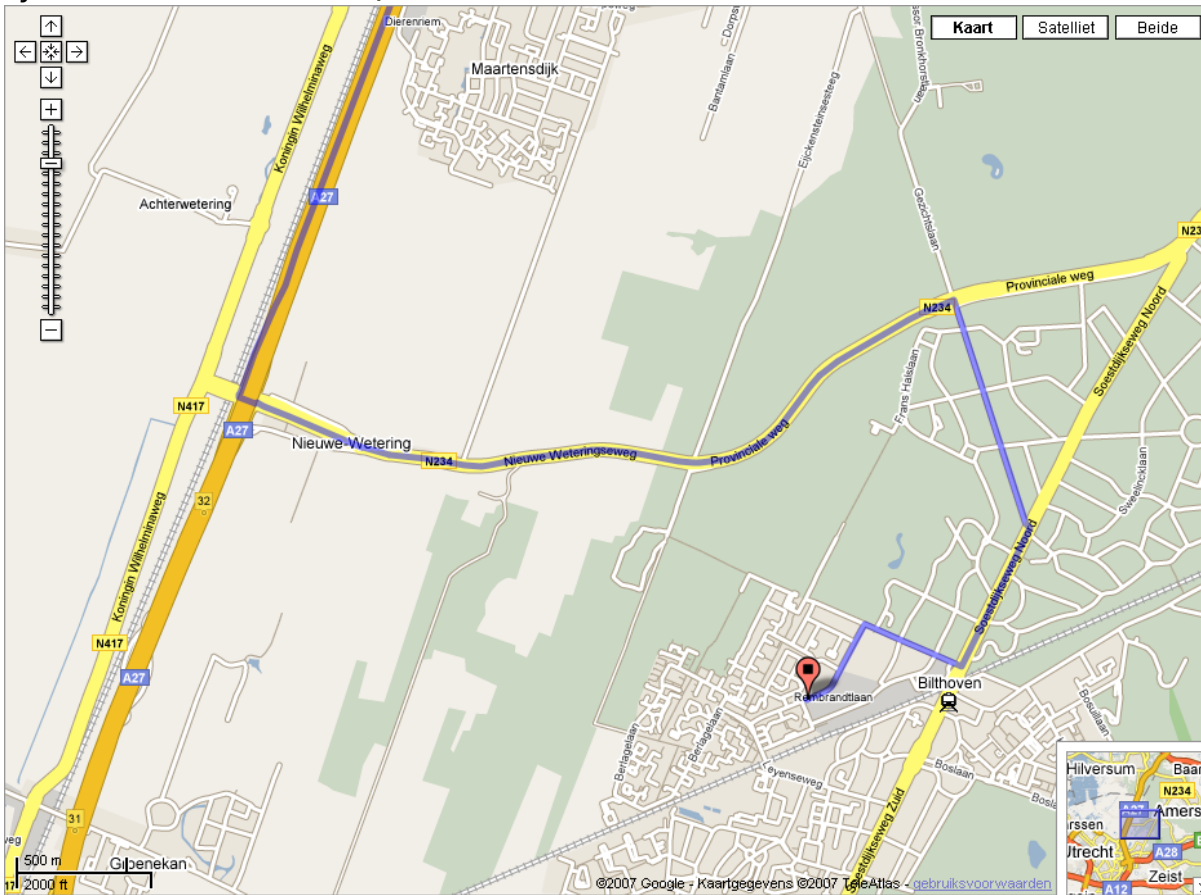
From Station Bilthoven it's a five minute walk to the office (a map is displayed below)



By car from interstate A27 from the south



By car from the interstate A27 from the north



By car from the interstate A28 from the east

